



Research Paper

IMPACT OF MERCURY ON HEPATOPANCREAS AND GONADS OF FRESH WATER BIVALVE *Lamellidens marginalis*

Suryawanshi, G. D. and S. G. Kamble

Department of Zoology,
Yogeshwari Mahavidyalaya, Ambajogai, Dist. Beed-431517,
India.

Abstract

Histological studies would help in evaluating the extent of damage caused to the tissues under stress. The bivalve *L. marginalis* were exposed to LC₀ and LC₅₀ values of 96 hrs with concentrations of 0.120, 0.687 ppm for HgCl₂ metal salts respectively. The results showed that the mercury caused deteriorative changes in all concentrations. During different hour exposure in higher concentrations of mercury metal the tissues showed swelling of the tubules, which was distinct from the connective tissue. The number of amoebocytes in the connective tissue decreased considerably. However, during acute exposed period in lower concentration of metal the tissues resulted the tubules completely lost their original shape probably due to dissolution of the basement membrane.

Key words: *L. marginalis*, mercury, acute toxicity, gonads.

INTRODUCTION

Bioaccumulation of heavy metals by bivalve molluscs such as fresh water bivalves might have implications on human exposure in India due to consumption as food. Year around monitoring of these shellfishes may provide adequate information on local discharges and seasonal variation in concentration of contaminants including heavy metals. High levels of heavy metals in different molluscs have been reported from different parts of the world (17 and 14). Considerable work has been done on toxicity of heavy metals to economically important bivalves with reference to changes in hepatopancreatic structure due to heavy metals (13, 2 and 4). Histology is an indispensable and powerful technique in establishing routine toxicology studies performed for the purpose of assessment of edible resources to

human beings. Its value lies not only in the sensitivity in terms of toxic levels but particularly in the disclosure of large organs and mechanisms of action. To assess its usefulness in toxicology studies with fish and shellfish, several investigators have performed experiments using various environmental contaminants (1, 20, 15 and 9). The hepatopancreas is a main organ of storage of metabolic reserves, which provides a source of energy during the periods of physiological stress in addition to its role in the digestion of food. The impairment of the cell architecture of hepatopancreas due to heavy metal stress definitely reflects in its metabolic disorder. 5 reported histopathological changes in the digestive gland–gonad complex of the marine prosobranch, *Littorina littorina* exposed to cadmium. The cellular responses to mercury and mercury in the digestive cells, cilia and digestive tubules of *Perna viridis* and *Diplodon chilensis* were studied 10.

The knowledge of reproductive cycle is necessary for predicting annual recruitment, interpreting growth, mortality and survival data and also in culture of species. In bivalve mollusks the reproduction has been studied by many researchers and much of the work has been reviewed exclusively on freshwater species and much of the literature on reproduction in bivalve mollusks is concerned with the gonad development and reports on breeding periods (16 and 19). Several environmental factors have been shown to control the reproductive cycle. Gametogenesis begins shortly after growth and maturation of the gonad (7 and 15). For freshwater species the studies comprise by dividing the gonad into a number of stages based on microscopic examination of histological sections in different parts of the year, on *Lamellidens marginalis* 8, on *P. corrugata* 18. It is in this view that the present study was done on the histological changes of depot tissue, hepatopancreas and gonads of the mussels *L. marginalis* exposed to mercury under laboratory conditions.

MATERIALS AND METHODS

During study the mussels *L. marginalis* were collected from Nagapur dam and soon after the collection they were brought to the laboratory and the shells were brushed to clean the fouling biomass and mud. The acute toxicity tests were performed on the bivalves

using lethal concentrations, LC^0 and LC^{50} values of mercury. The control group in normal was run simultaneously during experiment. The animals belonging to control and experimental were sacrificed separately to obtain hepatopancreas and gonad and these were fixed in Bouin's Hollande fixative for 48 hours. After fixation the tissues were then washed in distilled water and dehydrated in ethyl alcohol in different grades, cleared in xylene, embedded in tissue mat (at 58-60 °c melting point) and these were then sectioned at 5-6µm thickness on rotary microtome. These sections were stained with Mallory triple stain and mounted in DPX. All the observations and microphotography were made under research microscope.

RESULTS

The changes in hepatic tubules and its cellular structure due to metal toxicity of bivalves along with control are shown in **(figures 1-2)**. In control group of bivalves the hepatopancreas consists of ducts and digestive tubules grouped in the form of bundles indistinctly separated and connected interlobular connective tissues of collagenous fibers. Each tubule is bounded by thin muscle fibers, which form the basement membrane. Each digestive tubule consists of digestive cells, vacuolated and acidophilic and pyramidal type and basophilic type cells. When the bivalves exposed to metal concentrations of mercury the residual bodies or fragmentation spherules were comparatively more in the lumen in lower concentration than in higher concentration. Further the results showed that the mercury caused deteriorative changes in all concentrations comparatively metal concentrations. During different hour exposure period in higher concentrations of mercury the tissue showed swelling of the tubules, which was distinct from the connective tissue. The number of amoebocytes in the connective tissue decreased considerably.

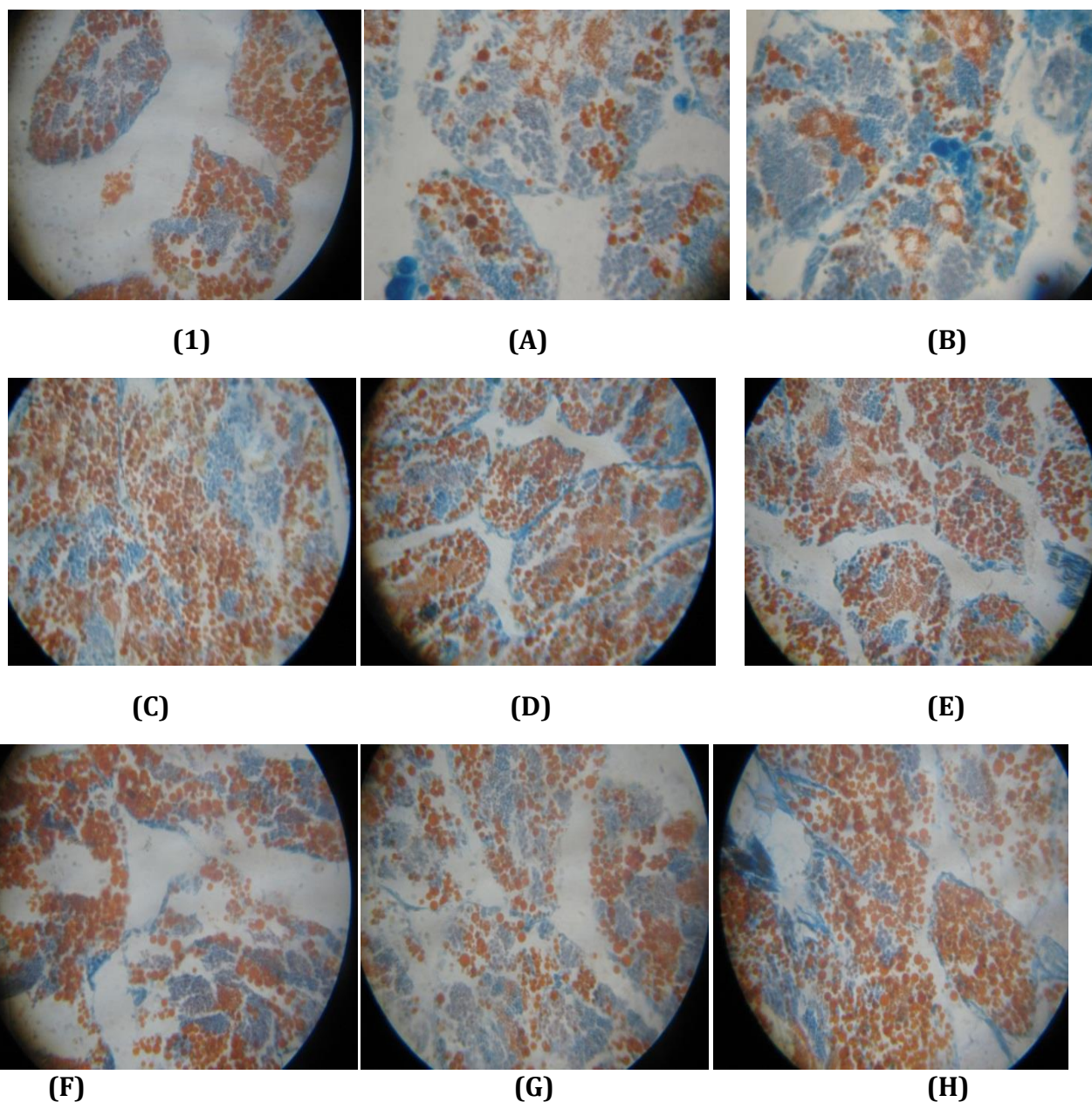


Fig. 1: Histological changes in hepatopancreas of *L. marginalis* exposed to mercuric chloride for 24, 48, 72 and 96hrs. 1=Control, A=LC₀, B=LC₅₀ for 24 hrs, C=LC₀, D=LC₅₀ for 48 hrs, E=LC₀, F=LC₅₀ for 72 hrs, G=LC₀, H=LC₅₀ for 96hrs,

The observations of the gonads (**fig-2**) showed the lumen was expanded in the metal accumulation period of LC⁰ as well as acute exposure period. Further the female ovaries many vitellogenic oocytes were found and being released in a few follicles degenerating oocytes were also seen in LC⁰ exposed bivalves. During acute exposure period in lower and higher concentrations of mercury metals the follicle wall ruptured at places and follicular content showed necrotic condition. This was more pronounced in LC⁵⁰ group

than the LC⁰ group follicle remained compact. Whereas during LC⁰ exposure period showed many previtellogenic and vitellogenic oocytes were formed. Prominent vacuole appeared in their nuclei and lipid globules and nutritive cells decreased much in quantity.

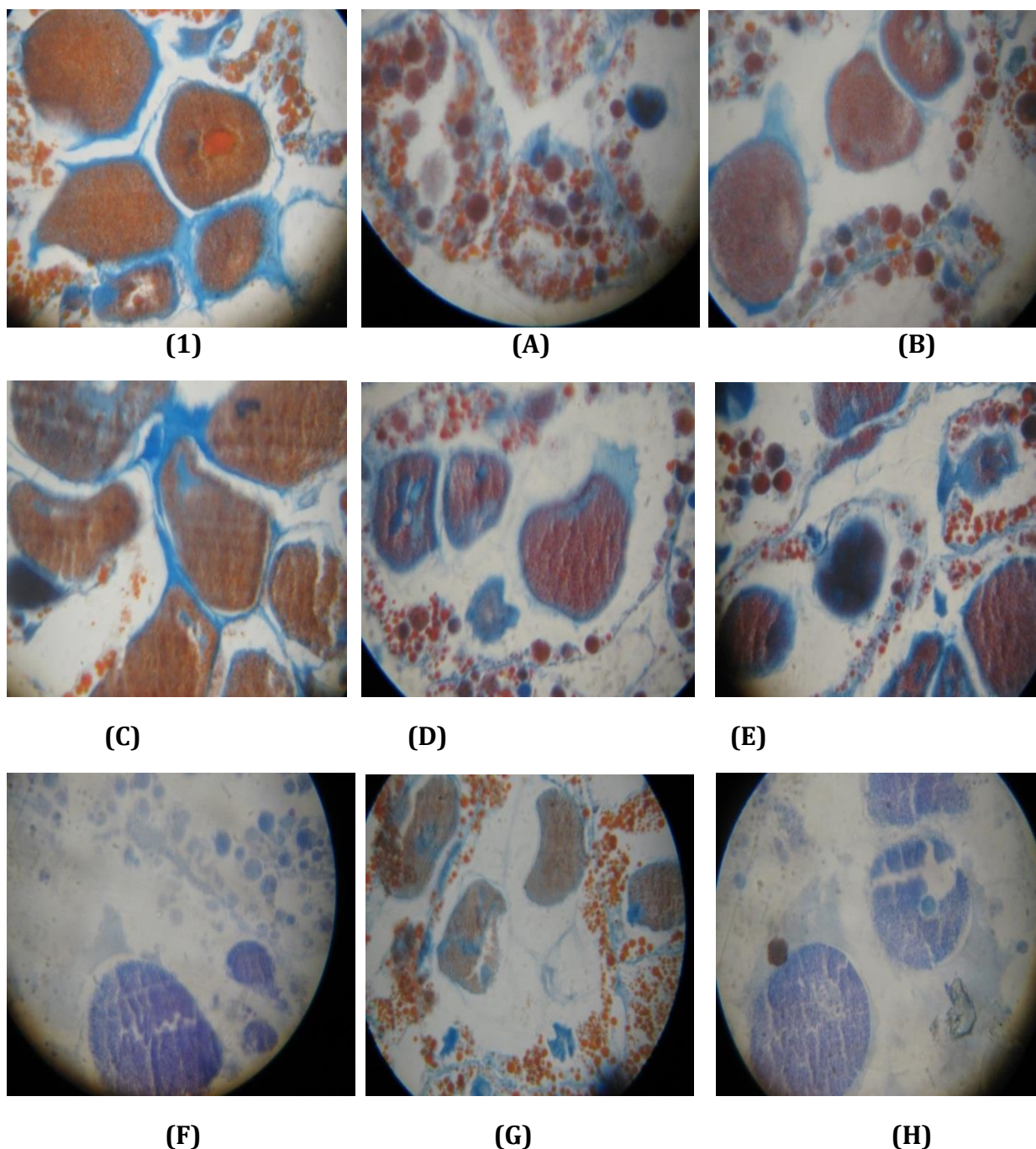


Fig 2: Histological changes in gonads of *L. marginalis* exposed to mercuric chloride for 24, 48, 72 and 96 hrs. 1= Control, A=LC₀, B=LC₅₀ for 24 hrs, C=LC₀, D=LC₅₀ for 48 hrs, E=LC₀, F=LC₅₀ for 72 hrs, G=LC₀, H=LC₅₀ for 96 hrs,

DISCUSSION

The freshwater environment, where concentrations of essential trace metals vary from limiting to toxic levels, particularly challenges an organism's ability to maintain appropriate reservoirs of essential metals. This problem is often compounded by the presence of significant concentrations of metals that can compete with uptake sites and intracellular binding sites. Such competition reduces the concentration of metals that are effectively available to the organism. The destruction of cellular structure of hepatopancreas due to pollutants definitely reflects in the metabolic activity of it. However, in *M. edulis* no significant reduction in lysosomal integrity was evident in the group exposed to the lowest mercury concentration; however, significant reduction in lysosomal latency was observed in the group exposed to highest concentration of mercury as observed by (3 and 12). 11 observed the heavy metal like cadmium was effective to *L. marginalis* to cause cellular destruction of hepatic lobules in winter season. Similarly in present study showed *L. marginalis* vacuolization and increase in intracellular space within the tubule was observed than in the control group. The digestive and secretory cells were both affected at cellular levels at different intensities the destruction was more pronounced in higher concentration of mercury and mercury than lower concentration, which might be due to higher intensity of metals, affected in higher concentration. 6 stated that pathological reactions of the lysosomal system in hepatopancreatic cells of bivalve mollusks have proven to be sensitive bioindicators of pollutant effect. Further, they studied the effects of several cell-to-cell signaling compounds on the lysosomes of the hepatopancreatic digestive cells.

The freshwater environment, where concentrations of essential trace metals vary from limiting to toxic levels, particularly challenges an organism's ability to maintain appropriate reservoirs of essential metals. Moreover, it encompasses a number of events, including fertilization, setting and organogenesis that are particularly sensitive to stressors. Perturbations in any of these processes can result in arrested or abnormal development. 1 while studying on the mussel *M. galloprovincialis* exposed to crude oil and commercial lubricant oil indicated that these changes in the lysosomal compartment appear to be associated to the process of gametes release or spawning. In the present study abnormalities developed in the gonadal cells, leading to the appearance of enhanced growth of these cells of *L. marginialis* could be also due to the

underlying mechanisms in the functional changes brought about by the different duration of exposure period. Organisms have evolved various strategies that appear to lower the effect of environmental changes; these include avoidance responses, repair or stabilization mechanisms and synthesis of detoxification enzymes or binding ligands. Presumably these strategies have evolved with a minimal cost in energy or rate limiting nutrients, although all of these processes require energy or nutrients that are diverted from other uses.

Mercury appeared to cause more extensive mitochondrial damage than did treatment with mercury. In the present study, it is possible that penetration of heavy metals in the gonad tissue of *L. marginalis* could have resulted in the changes in lysosomal compartment of vitellogenic oocytes, particularly in higher concentration and acute exposed bivalves due to which the mature gametes instead of being spawned out showed degenerative changes. Based on these findings it can be presumed under present study that vitellogenic oocytes formed due to metal stress are retained on metaphase Ist and no short-lived proteins are synthesized because of the formation of metalloproteins. In addition, it is possible that the total or partial destruction on the synthesis of vitellin- like protein from the haemolymph and related ovarian proteins could have caused the little large sized oocytes to undergo lysis after metal stress. It has been reported that the achievement of gametogenesis in adult bivalve mollusks, *M. edulis* during reproductive cycle depends upon the action of different neuroendocrine factors, a mitotic factor allowing the multiplication of oogonia and spermatogonia and a vitellogenic factor acting on vitellogenesis 17. To deal with these challenges, freshwater organisms have evolved a number of adaptive strategies that are collectively referred to as metal metabolism.

ACKNOWLEDGEMENT

The authors are grateful to Principal, Yogeshwari Mahavidyalaya, Ambajogai for providing laboratory facilities.

REFERENCES

- Cajaraville, M.P., Díez, G., Marigómez, J.A., Angulo, E., 1990. Responses of the basophilic cells of digestive gland of mussels to petroleum hydrocarbon exposure. *Dis. Aquat. Org.* 9, 221–228.
- Domouthtsidou, G. P. and Dimitriadis, V. K. 2000. Ultrastructural localization of heavy metals (Hg, Ag, Pb, and Cu.) in gills and digestive gland of mussels, *Mytilus galloprovincialis*. *Arch. Environ. Contam. Toxicol.*, 38(4) :472-478.
- Kulkarni, S. D. 1993. Cadmium toxicity to freshwater mollusk *Lamellidens marginalis* from Godavari River, near Aurangabad. Ph. D. Thesis, Marathwada University, Aurangabad
- Liu, X.J., Luo, Z., Xiong, B.X., Liu, X., Zhao, Y.H., Hua, G.F., Lv, G.J., 2010. Effect of waterborne mercury exposure on growth, hepatic enzymatic activities and histology in *Synechogobius hasta*. *Ecotoxicol. Environ. Saf.* 73, 1286–1291.
- Marrigomez, J. A., Cajaraville, M. P. and Angulo, E. 1990. Histopathology of the digestive gland and gonad complex of the marine prosobranch *Littorina littorina* exposed to cadmium. *Aquatic. Org.*, 9(3); 229-238.
- Moore, J.W. and Ramamoorthy, S. 1984. *Heavy Metals in Natural Waters: Applied Monitoring and Impact Assessment*. New York: Springer-Verlag.
- Ortiz-Zarragoitia, M., Cajaraville, M.P., 2006. Biomarkers of exposure and reproduction related effects in mussels exposed to endocrine disrupters. *Arch. Environ. Contam. Toxicol.* 50, 361–369.
- Patil, S. S. and Mane, U. H. 2000. Changes in hepatopancreas of the bivalve *Lamellidens marginalis* due to acute mercury stress. *Proc. Nat. Acad. Sci. India.* 70(B), II, 133-138.
- Raftopoulou, E.K., Dimitriadis, V.K., 2011. Comparative study of the accumulation and detoxification of Cu (essential metal) and Hg (nonessential metal) in the digestive gland and gills of mussels *Mytilus galloprovincialis*, using analytical and histochemical techniques. *Chemosphere* 83, 1155–1165.

- Sebastián E. Sabatini , Iara Rocchetta , Daniel E. Nahabedian , Carlos M. Luquet, Maria Rosa Eppis , Laura Bianchi , María del Carmen Ríos de Molina 2014. Oxidative stress and histological alterations produced by dietary mercury in the fresh water bivalve *Diplodon chilensis*. *Comparative Biochemistry and Physiology, Part C* 154 : 391–398
- Shaikh Yasmeen, G. D. Suryawanshi and U. H. Mane 2012. Histopathological changes in the hepatopancreas of *Lamellidens marginalis* exposed to cadmium in winter. *International Multidisciplinary Research Journal* 2012, 2(6): 41-43.
- Sheir, S.K., Handy, R.D., Galloway, T.S., 2010. Tissue injury and cellular immune responses to mercuric chloride exposure in the common mussel *Mytilus edulis*: Modulation by lipopolysaccharide. *Ecotoxicol. Environ. Saf.* 73, 1338–1344.
- Sivaramakrishna, B. and Radhakrishnaiah, K. 2000. Mercury induced alterations in the energetics of hepatopancreas of two freshwater molluscs, *Pilaglobosa* and *Lamellidens marginalis*. In: *Trace Elements Their Distribution and Effects in the Environment* (Eds.) Markert, B and Friese, K., Elsevier, Amsterdam, 389-409.
- Suryawanshi, G. D. 2002. Impact of heavy metals on the oyster *Crassostrea cattuckensis* (Newton and Smith) from coast of Maharashtra. Ph. D. Thesis Dr. Babasaheb Ambedkar Marathwada University, Aurangabad. Pp. 1-310.
- Usheva, L.N., Vaschenko, M.A., Durkina, V.B., 2006. Histopathology of the digestive gland of the bivalve mollusk *Crenomytilus grayanus* (Dunker, 1853) from Southwestern Peter the Great Bay, Sea of Japan. *Histology* 32, 166–172.
- Wagner, A., Boman, J., 2004. Biomonitoring of trace elements in Vietnamese freshwater mussels. *Spectrochim Acta B* 59, 1125–1132.
- Wang, W.X., and Ke, C. 2002. Dominance of dietary intake of cadmium and zinc by two marine predatory gastropods. *Aquat. Toxicol.*, 56(3) : 153-165.
- Waykar B and Shinde S 2013. Bioaccumulation and distribution of heavy metals in different soft body tissues of the freshwater bivalve, *P. corrugata*. *Ind. J. of Appl. Res.*, 3, 4, 10-13

- Wepener, V., Bervoets, L., Mubiana, V., Blust, R., 2008. Metal exposure and biological responses in resident and transplanted blue mussels (*Mytilus edulis*) from the Scheldt estuary. *Mar. Pollut. Bull.* 57, 624–631.
- Wester, P. W. 1991. Histopathological effects of environmental pollutants B. HCH and methyl mercury on reproductive organs In freshwater fish. *Comp. Biochem. Physiol.* 110C(1/2):237-239.